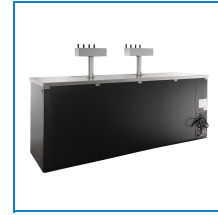


## Avantco UDD-4-HC (2) Four Tap Kegerator Beer Dispenser - Black, (4) 1/2 Keg Capacity

Item #178UDD48



### Technical Data

Width	90 1/4 Inches
Depth	27 3/4 Inches
Height	35 5/8 Inches
Interior Width	77 3/4 Inches
Interior Depth	21 7/8 Inches
Faucet Height	10 1/4 Inches
Interior Height	30 1/2 Inches
Tap Tower Height	16 Inches
Tap Tower Diameter	3 Inches
Amps	2.4 Amps
Phase	1 Phase
Voltage	115 Volts
Compressor Location	Left Side Mounted
Door Type	Solid
Exterior Finish	Black
Features	LED Lighting
Horsepower	1/2 HP
Number of Doors	3 Doors
Number of Kegs	4 Kegs
Number of Taps	8+ Taps
Plug Type	NEMA 5-15P
Refrigerant Type	R-290
Style	1/2 Barrel
Type	Kegerators / Beer Dispensers

### Features

- 4 shelves included for optional bottle and can storage for increased versatility
- (2) 4-tap towers with 10 1/4" faucet height
- Energy efficient LED interior lighting
- Includes (8) "D" system couplers and keg mat
- 115V; 1/2 hp compressor; eco-friendly R290 refrigerant; 2.4 Amps

### Certifications



ETL US



5-15P



ETL Sanitation



## Notes & Details

Whether you operate a pub, banquet hall, catering service, or facilitate other special events, this Avantco UDD-4-HC (2) four tap beer dispenser is an excellent way to offer crisp, refreshing draft beer to your guests without investing in a complex built-in tap system! This unit features (2) four tap towers with a 10 1/4" faucet height that allows you to easily fill pint glasses and pitchers with local microbrews, international macrobrews, and everything in between. It holds (4) 1/2 kegs so you can stock up on one brew or offer customers a selection to choose from, and it even comes with 4 shelves for optional bottle or can storage while concealing the product behind 3 solid doors. The doors themselves are not only self-closing to prevent potential energy loss, but also lock to prevent theft during off hours.

Unlike many competitive beer dispensers, this model ships with "D" system couplers. It features a black coated steel exterior and a 304 type stainless steel interior that is both durable and easy to clean, while a built-in drip tray further expedites end-of-day cleaning. It has a 1/2 hp refrigeration system that circulates environmentally-friendly R290 hydrocarbon refrigerant. R290 refrigerant has an ozone depletion potential (ODP) of 0 and a global warming potential (GWP) of 3, making it an environmentally-responsible choice for your business. A 115V electrical connection is required for operation.

**⚠ WARNING:** This product can expose you to chemicals including lead, which are known to the State of California to cause cancer, birth defects, or other reproductive harm. For more information, go to [www.p65warnings.ca.gov](http://www.p65warnings.ca.gov).